






SOURCE: IDG Parkitects, Inc.

Harvard-Westlake Parking Structure ■

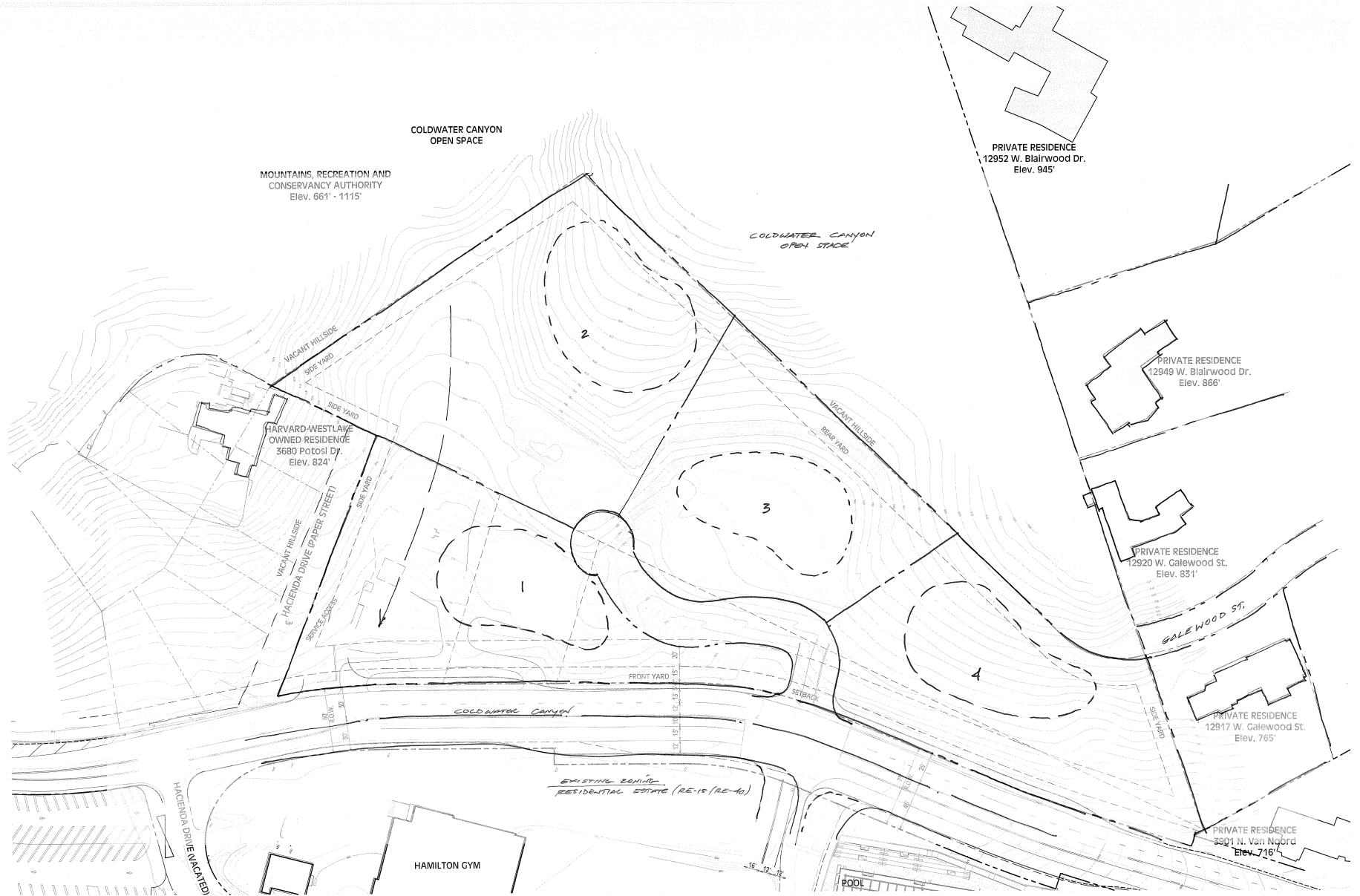
Figure 2-11

Rendering of Parking Structure and Pedestrian Bridge Looking South (Aerial View) Along Coldwater Canyon Avenue



-  MRCA Property
-  Proposed project location boundary
-  Proposed parking structure and bridge



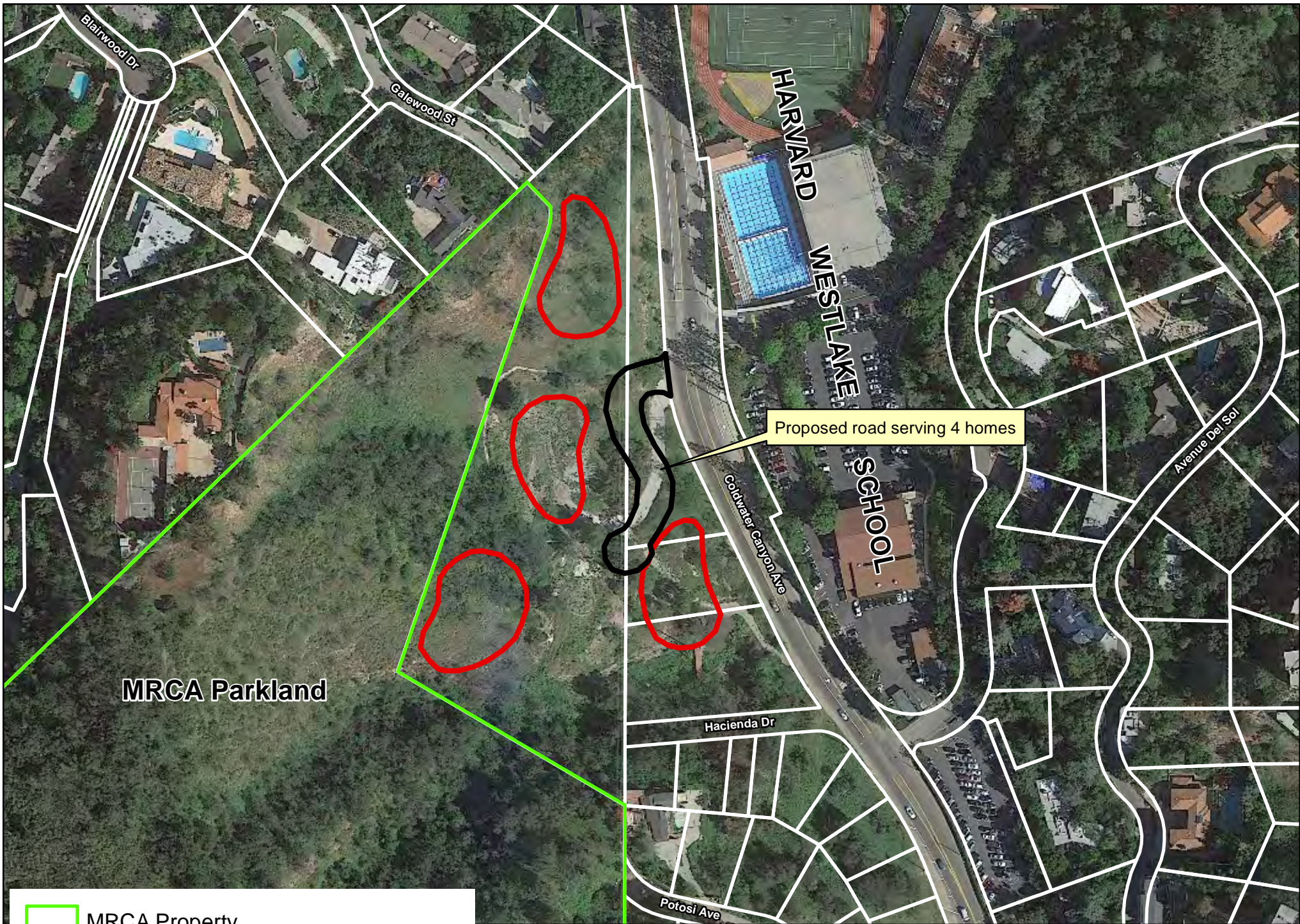




Harvard-Westlake Parking Structure ■

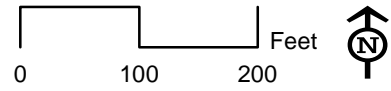
SOURCE: IDG Parkitects, Inc.

Figure 5-1

Alternative 2 -- Conceptual Layout of Four New Homesites



-  MRCA Property
-  Alternative 2 proposed home locations





SOURCE: IDG Parkitects, Inc.

Harvard-Westlake Parking Structure ■

Figure 5-3

Alternative 4 -- Smaller Footprint